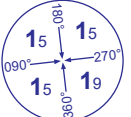
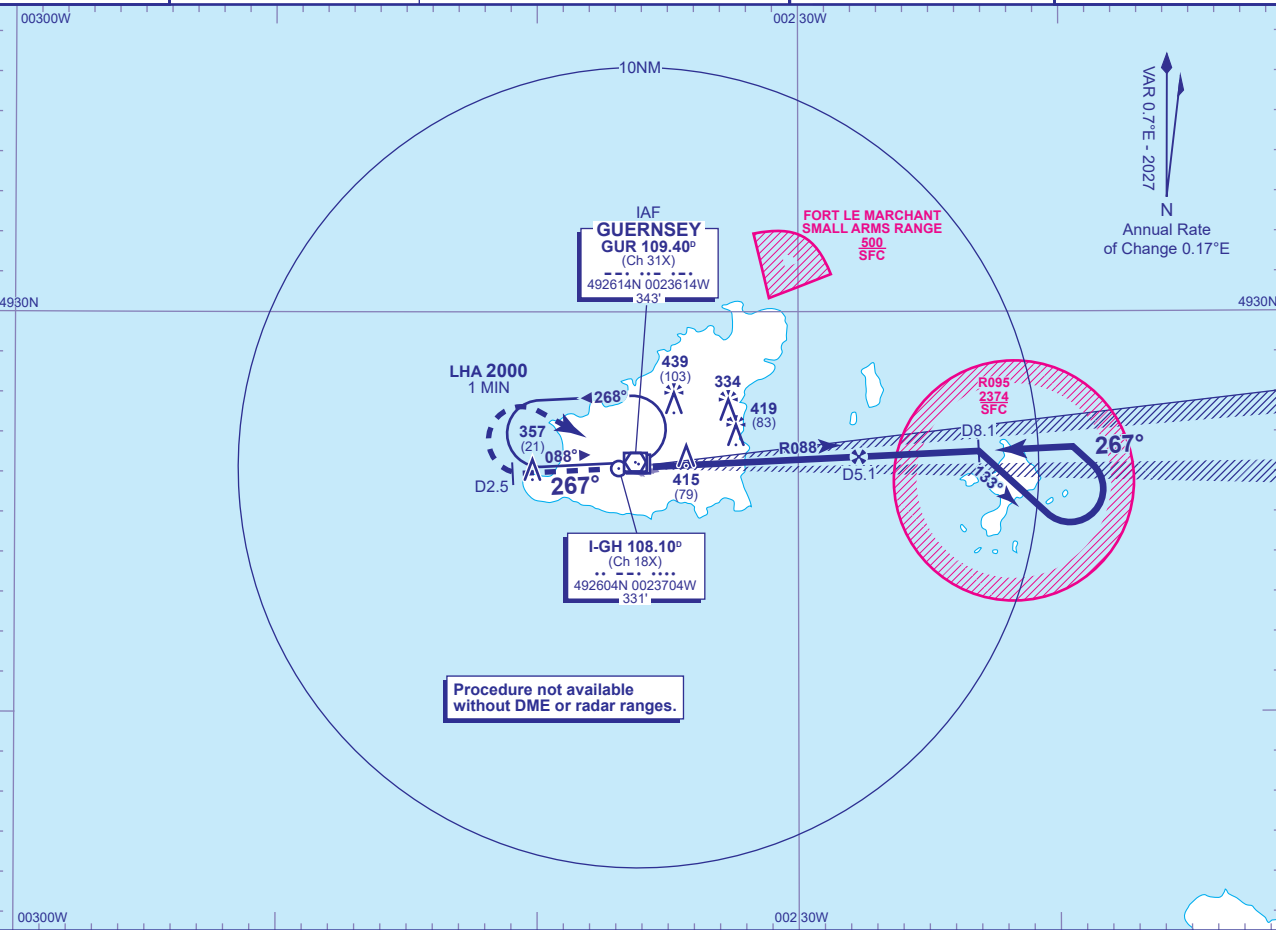


INSTRUMENT APPROACH CHART - ICAO

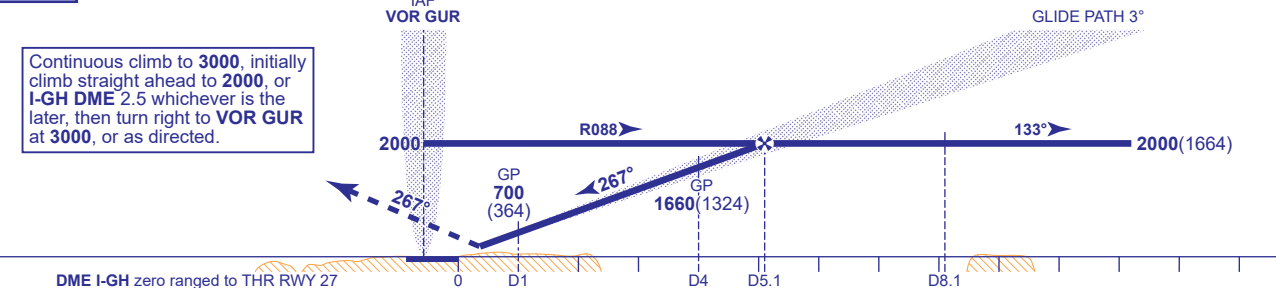
GUERNSEY
ILS/DME/VOR
RWY 27
(ACFT CAT A,B,C,D)

 MSA 25NM VOR GUR	APP 128.655	GUERNSEY APPROACH	AD ELEVATION 336	TRANSITION ALTITUDE 5000
	TWR 119.955	GUERNSEY TOWER	THR ELEVATION 336	
	GMC 121.805	GUERNSEY GROUND	OBSTACLE ELEVATION 439 AMSL (103) (ABOVE THR)	
	RAD 124.505	GUERNSEY RADAR	BEARINGS ARE MAGNETIC	
	ATIS 109.400	GUERNSEY INFORMATION		



RECOMMENDED PROFILE GLIDE PATH 3°, 320FT/NM					
DME I-GH	5	4	3	2	1
ALT(HGT)	1980(1644)	1660(1324)	1340(1004)	1020(684)	700(364)

RDH 44



Aircraft Category		A	B	C	D	Rate of descent	G/S KT	160	140	120	100	80
OCA (OCH)	CAT I	508(172)	516(180)	526(190)	537(201)		FT/MIN	850	740	640	530	420
VM(C)OCA (OCH AAL)	Total Area	830(494)	830(494)	930(594)	1030(694)							

AIRCRAFT UNABLE TO RECEIVE DME
Inform ATC. Radar ranges will be passed at 8.1NM outbound, 5.1NM inbound and 2.5NM outbound during missed approach procedure.

- NOTE
- 1 Authority to penetrate restricted area R095 will be granted by Guernsey ATC prior to start of this procedure.
 - 2 Aircraft will normally be required to hold not lower than 3000.
 - 3 Pilots must not descend on RWY 27 GP until fully established on RWY 27 LOC.